



**India Meteorological Department
(Ministry of Earth Sciences)**

BULLETIN NO.40: (ARB/01/2021)

TIME OF ISSUE: 1445 HOURS IST

DATED: 19.05.2021

FROM: INDIA METEOROLOGICAL DEPARTMENT (FAX NO. 24643965/24699216/24623220)

TO: CONTROL ROOM, NDM, MINISTRY OF HOME AFFAIRS (FAX.NO. 23092398/23093750)

CONTROL ROOM NDMA (FAX.NO. 26701729)

CABINET SECRETARIAT (FAX.NO.23012284, 23018638)

PS TO HON'BLE MINISTER FOR S & T AND EARTH SCIENCES (FAX NO.23316745)

SECRETARY, MOES (FAX NO. 24629777)

H.Q. (INTEGRATED DEFENCE STAFF AND CDS) (FAX NO. 23005137/23005147)

DIRECTOR GENERAL, DOORDARSHAN (23385843)

DIRECTOR GENERAL, AIR (23421101, 23421105, 23421219)

PIB MOES (FAX NO. 23389042)

UNI (FAX NO. 23355841)

D.G. NATIONAL DISASTER RESPONSE FORCE (NDRF) (FAX NO. 26105912, 2436 3260)

DIRECTOR, PUNCTUALITY, INDIAN RAILWAYS (FAX NO. 23388503)

CHIEF SECRETARY, GUJARAT (FAX NO. 079-23250305)

CHIEF SECRETARY, DAMAN & DIU (FAX NO. 0260-2230775)

CHIEF SECRETARY, DADRA & NAGAR HAVELI (FAX NO. 0260-2645466)

CHIEF SECRETARY, RAJASTHAN (FAX NO. 0141-2227114)

Subject: Depression (remnant of the Extremely Severe Cyclonic Storm "Tauktae") over east Rajasthan and neighbourhood

The **Depression** (remnant of the Extremely Severe Cyclonic Storm "Tauktae") over **southeast Rajasthan and neighbourhood** moved northeastwards with a speed of about 37 kmph during past 06 hours, and lay centred at 1130 hours IST of today, the 19th May, 2021 over **east Rajasthan**, near latitude 25.8°N and longitude 74.8°E about 150 km west-southwest of Jaipur (Rajasthan) It is very likely to move northeastwards and weaken into a Well Marked Low pressure area during next 06 hours. The remnant of the system is very likely to move further northeastwards across Rajasthan to Uttar Pradesh during the next two days.

Warnings:

(i) Rainfall:

- Light to moderate rainfall at most places with heavy to very heavy falls at isolated places very likely over East Rajasthan on 19th May.
- The interaction of the remnant low pressure system with a trough in westerlies associated with a Western Disturbance is very likely to cause light to moderate rainfall at most places with heavy to very heavy falls and extremely heavy falls at isolated places over Uttarakhand , heavy to very heavy rainfall at isolated places over Himachal Pradesh, Haryana, West Uttar Pradesh and Heavy rainfall at isolated places over Punjab, East Uttar Pradesh, north Madhya Pradesh and West Rajasthan during next 24 hours.

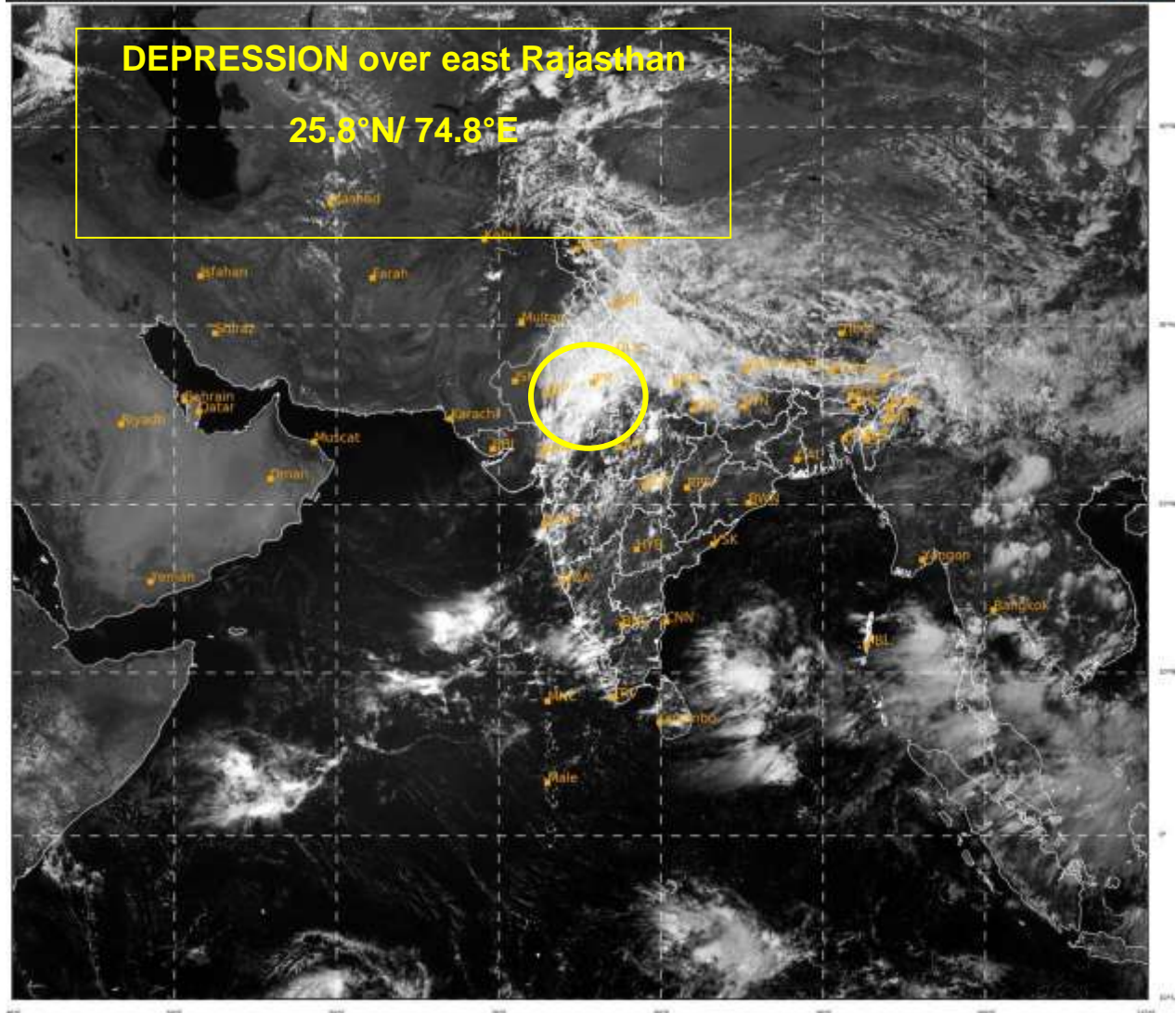
(ii) Wind warning

- Squally wind speed reaching 45-55 kmph gusting to 65 kmph is likely to prevail over East Rajasthan and adjoining west Madhya Pradesh during next 12 hours.

The next bulletin will be issued at 2030 hrs IST of 19th May, 2021.

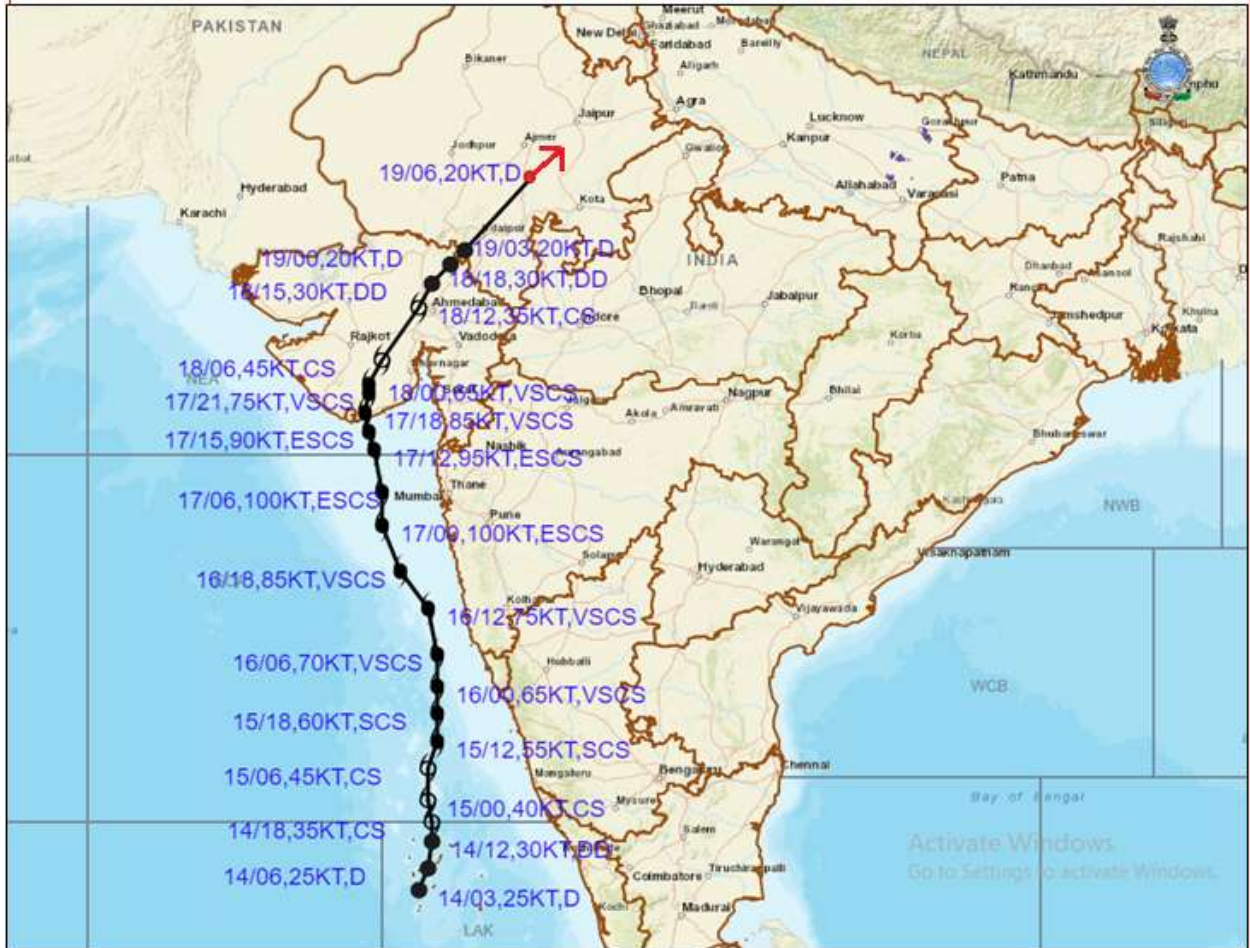
**(Sunitha Devi. S)
Scientist-F, RSMC, New Delhi**

Copy to: MC Jaipur /ACWC Mumbai /CWC Ahmedabad.





OBSERVED AND FORECAST TRACK OF DEPRESSION (REMNANT OF "TAUKTAE") OVER EAST RAJASTHAN BASED ON 0600 UTC OF 19TH MAY, 2021



DATE/TIME IN UTC
 IST=UTC + 0530
 L: LOW PRESSURE AREA
 WML: WELL MARKED LOW PRESSURE AREA
 D: DEPRESSION (17-27 KT)
 DD: DEEP DEPRESSION (28-33 KT)
 CS: CYCLONIC STORM (34-47 KT)
 SCS: SEVERE CYCLONIC STORM (48-63KT)
 VSCS: VERY SEVERE CYCLONIC STORM (64-89 KT)
 ESCS: EXTREMELY SEVERE CYCLONIC STORM (90-119 KT)
 SuCS: SUPER CYCLONIC STORM (≥ 120 KT)

- LESS THAN 34 KT
- 34-47 KT
- ≥ 48 KT
- OBSERVED TRACK
- FORECAST TRACK
- CONE OF UNCERTAINTY